

Dog Lover's Hot Pad

A cozy crochet hot pad featuring a playful paw print design



Designed by Angela Dooley of SASS Crochet

This is the ad-free, printable PDF version of the Dog Lover's Hot Pad crochet pattern.

Includes a colorwork chart and step-by-step photo tutorials to help you confidently create the paw print design.

Stitch Key

ch = chain

dc = double crochet

sc = single crochet

FSC = Foundation Single Crochet

sl st = slip stitch

st(s) = stitch(es)

RS = Right Side

WS = Wrong Side

BLO = Back Loop Only

FLO = Front Loop Only

PC = Popcorn Stitch

Pattern Notes

- Intermediate pattern.
- Written in US crochet terms.
- Finished size = 8.5" tall x 8.5" wide.
- Gauge: 7.5 sc x 8.25 rows = 2".
- Chain stitch at the beginning of row does not count as a stitch. Always place 1st stitch of each row in same stitch as beginning chain unless stated otherwise.
- **When changing colors, I do not fasten off the Main Color. I drop the Main Color and join the next color. I clip the paw color after completing that row.**
- I used a combination of tapestry & intarsia crochet techniques. Be sure to leave some slack in the carried yarn and always carry the yarn on the WS.
- To change colors do not complete sc. Leave 2 loops on hook, yarn over with new color and pull through 2 loops on hook. See photo tutorials on pages 9 & 10 on how to change colors from MC to PC and PC to MC.
- See written instructions and photo tutorial on page 8 for the Popcorn Stitch.
- Chart is provided below. Each square on the chart counts as one st.
- Each hot pad is made up of 2 pieces, a front and back, connected with a border.
- Stitch count is only listed on each row when there is a change.
- Starting at the bottom right corner, odd numbered rows are read ← and are RS rows. Even numbered rows are read → and are WS rows.

NOTE:

1. Cotton yarn is recommended as acrylic yarn will likely melt when placing a hot pan on it.
2. The Hot Pad is to help protect your countertops when placing a hot pan on them. It is not intended to pick up or remove hot items from an oven or stove. This does not replace an oven mitt.

Dog Lover's Hot Pad – At a Glance

Finished Size:

Approx. 8.5" x 8.5"

Skill Level:

Intermediate (or Advanced Beginner – see note below 📌)

Yarn:

Worsted Weight (#4) Cotton Yarn

- **Color A (Background):** approx. 130–140 yds
- **Color B (Paw Print):** approx. 20–25 yds

Hook:

4.0 mm (G) hook (or size needed to obtain gauge)

Notions:

Yarn needle, scissors, measuring tape (optional)

Gauge:

7.5 sc x 8.25 rows = 2" x 2" in single crochet

Construction

Worked in rows to create a front and back panel. Panels are joined together and finished with a textured border. Paw print design is created using colorwork and popcorn stitches.

Maker Tips

- Keep popcorn stitches consistent: Maintaining even tension will help the paw print stand out cleanly.
- Watch your color changes: Clean color transitions make a big difference in the finished look.
- Check your edges: Even spacing along the sides will help your border lay flat and neat.

Dog Lover's Hot Pad

Front Panel

With Color A

Row 1 (RS – Foundation):

27 FSC, ch 1, turn. (27 sc)

Row 2 (WS):

sc in each st across, ch 1, turn. (27 sc)

Row 3 (RS):

sc in each st across, ch 1, turn.

Row 4 (WS):

sc in each st across, ch 1, turn.

Row 5 (RS):

sc in each st across, ch 1, turn.

Begin paw print shaping in the next row using Color B and popcorn stitches.

Row 6 (WS):

sc in next 8, join Color B, PC in next 2, join Color A, sc in next 7, join Color B, PC in next 2, join Color A, sc in next 8, ch 1, turn. (4 PC, 23 sc) **See PC photo tutorial on Page 8.**

Row 7 (RS):

sc in next 7, join Color B, sc in next 3, join Color A, sc in next 6, join Color B, sc in next 3, join Color A, sc in next 8, ch 1, turn. (27 sc)

Row 8 (WS):

sc in next 5, join Color B, PC, sc, PC, sc in next 4, PC in next 3, sc in next 4, PC, sc, PC, join Color A, sc in next 5, ch 1, turn. (7 PC, 20 sc)

Row 9 (RS):

sc in next 5, join Color B, sc in next 17, join Color A, sc in next 5, ch 1, turn. (27 sc)

Row 10 (WS):

sc in next 4, join Color B, PC in next 2, sc in next 15, PC in next 2, join Color A, sc in next 4, ch 1, turn. (4 PC, 23 sc)

Dog Lover's Hot Pad

Row 11 (RS):

sc in next 5, join Color B, sc in next 17, join Color A, sc in next 5.

Row 12 (WS):

sc in next 5, join Color B, PC in next 2, sc in next 13, PC in next 2, join Color A, sc in next 5, ch 1, turn. (4 PC, 23 sc)

Row 13 (RS):

sc in next 6, join Color B, sc in next 15, join Color A, sc in next 6, ch 1, turn. (27 sc)

Row 14 (WS):

sc in next 6, join Color B, PC in next 2, sc in next 11, PC in next 2, join Color A, sc in next 6, ch 1, turn. (4 PC, 23 sc)

Row 15 (RS):

sc in next 8, join Color B, sc in next 11, join Color A, sc in next 8, ch 1, turn. (27 sc)

Row 16 (WS):

sc in next 8, join Color B, PC in next 2, sc in next 7, PC in next 2, join Color A, sc in next 8, ch 1, turn. (4 PC, 23 sc)

Row 17 (RS):

sc in next 10, join Color B, sc in next 7, join Color A, sc in next 10, ch 1, turn. (27 sc)

Row 18 (WS):

sc in next 3, join Color B, PC, sc, PC, join Color A, sc in next 4, join Color B, PC, sc, PC, sc, PC, sc, PC, sc, PC, join Color A, sc in next 4, join Color B, PC, sc, PC, join Color A, sc in next 3, ch 1, turn. (8 PC, 19 sc)

Row 19 (RS):

sc in next 2, join Color B, sc in next 4, join Color A, sc in next 14, join Color B, sc in next 4, join Color A, sc in next 3, ch 1, turn. (27 sc)

Row 20 (WS):

sc in next 2, join Color B, PC, sc in next 3, PC, join Color A, sc in next 13, join Color B, PC, sc in next 3, PC, join Color A, sc in next 2, ch 1, turn. (4 PC, 23 sc)

Row 21 (RS):

sc in next 3, join Color B, sc in next 3, join Color A, sc in next 15, join Color B, sc in next 3, join Color A, sc in next 3, ch 1, turn. (27 sc)

Dog Lover's Hot Pad

Row 22 (WS):

sc in next 3, join Color B, PC, sc, PC, join Color A, sc in next 2, join Color B, PC, sc, PC, join Color A, sc in next 5, join Color B, PC, sc, PC, join Color A, sc in next 2, join Color B, PC, sc, PC, join Color A, sc in next 3, ch 1, turn. (8 PC, 19 sc)

Row 23 (RS):

sc in next 7, join Color B, sc in next 4, join Color A, sc in next 4, join Color B, sc in next 4, join Color A, sc in next 8, ch 1, turn. (27 sc)

Row 24 (WS):

sc in next 7, join Color B, PC, sc in next 3, PC, join Color A, sc in next 3, join Color B, PC, sc in next 3, PC, join Color A, sc in next 7, ch 1, turn. (4 PC, 23 sc)

Row 25 (RS):

sc in next 8, join Color B, sc in next 3, join Color A, sc in next 5, join Color B, sc in next 3, join Color A, sc in next 8, ch 1, turn. (27 sc)

Row 26 (WS):

sc in next 8, join Color B, PC, sc, PC, join Color A, sc in next 5, join Color B, PC, sc, PC, join Color A, sc in next 8, ch 1, turn. (4 PC, 23 sc)

Row 27 (RS):

sc in each st across, ch 1, turn. (27 sc)

Row 28 (WS):

sc in each st across, ch 1, turn. (27 sc)

Row 29 (RS):

sc in each st across, ch 1, turn.

Row 30 (WS):

sc in each st across, ch 1, turn.

Row 31 (RS):

sc in each st across.

Finish off and weave in ends.

Dog Lover's Hot Pad

Back Panel

NOTE: There is not a RS/WS for this panel.

With Color A

Row 1:

27 FSC, ch 1, turn.

Rows 2 - 30:

sc in each st across, ch 1, turn. (27 sc)

Row 31:

sc in each st across, ch 1, turn.

Do not fasten off. Continue to border.

BORDER

(With RS facing, align front and back panels with paw print facing outward.)

NOTE: The panels are connected by working down each of the sides and across the top and bottom. Hold the panels together being sure to place the back panel to the back of the front (paw print) panel. Make sure the PC design is on the outside and facing you. **(See photos on page 6.)**

Rnd 1:

Sl st to join in the top right corner. Ch 1, sc in each st across top (26 sc), work 3 sc in last st, sc in each row end down side (30 sc), work 3 sc in corner, sc in each st across bottom (25 sc), work 3 sc in corner, sc in each row end up next side (30 sc), work 2 sc in corner, sl st to join to 1st sc, ch 2. **(See photo 1.)**

Rnd 2:

FLO, dc in each st around, sl st to join to 1st dc, ch 1. (122 dc) **See photo 2.**

Rnd 3:

BLO of Rnd 2 and BLO of Rnd 1, sc in each st around, sl st to join to 1st sc. **(See photos 3 - 4.)**

Finish off and weave in ends.

Optional hanging loop

Complete last sc, sl st to 1st sc, ch 7, sl st into same st.

Finish off and weave in ends.

Dog Lover's Hot Pad

BORDER



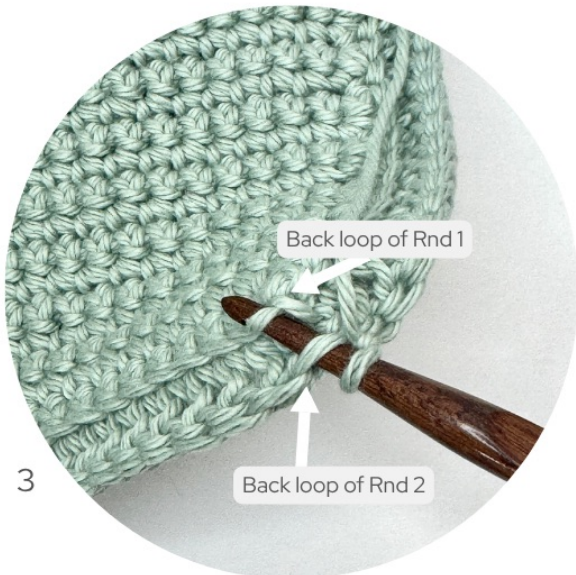
1

Rnd 1 - Slst to join in the top right corner of the 2 blocks.



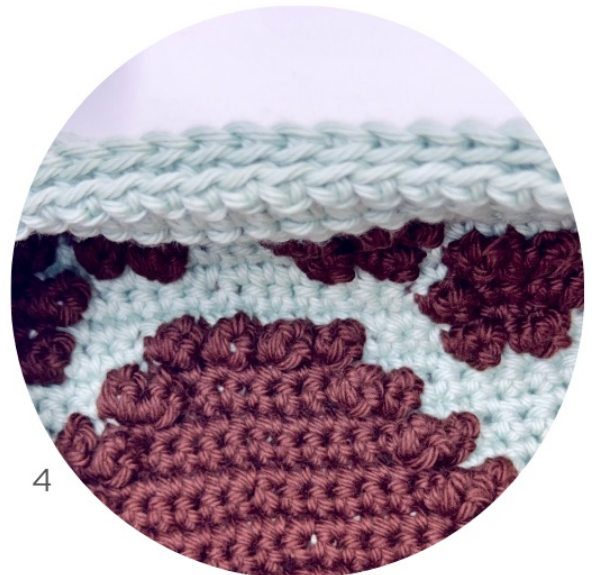
2

Rnd 2 - FLO, dc in each around, slst to join to 1st dc, ch 1.



3

Rnd 3 - BLO of Rnd 2 and BLO of Rnd 1, sc in each st around, slst to join to 1st sc.



4

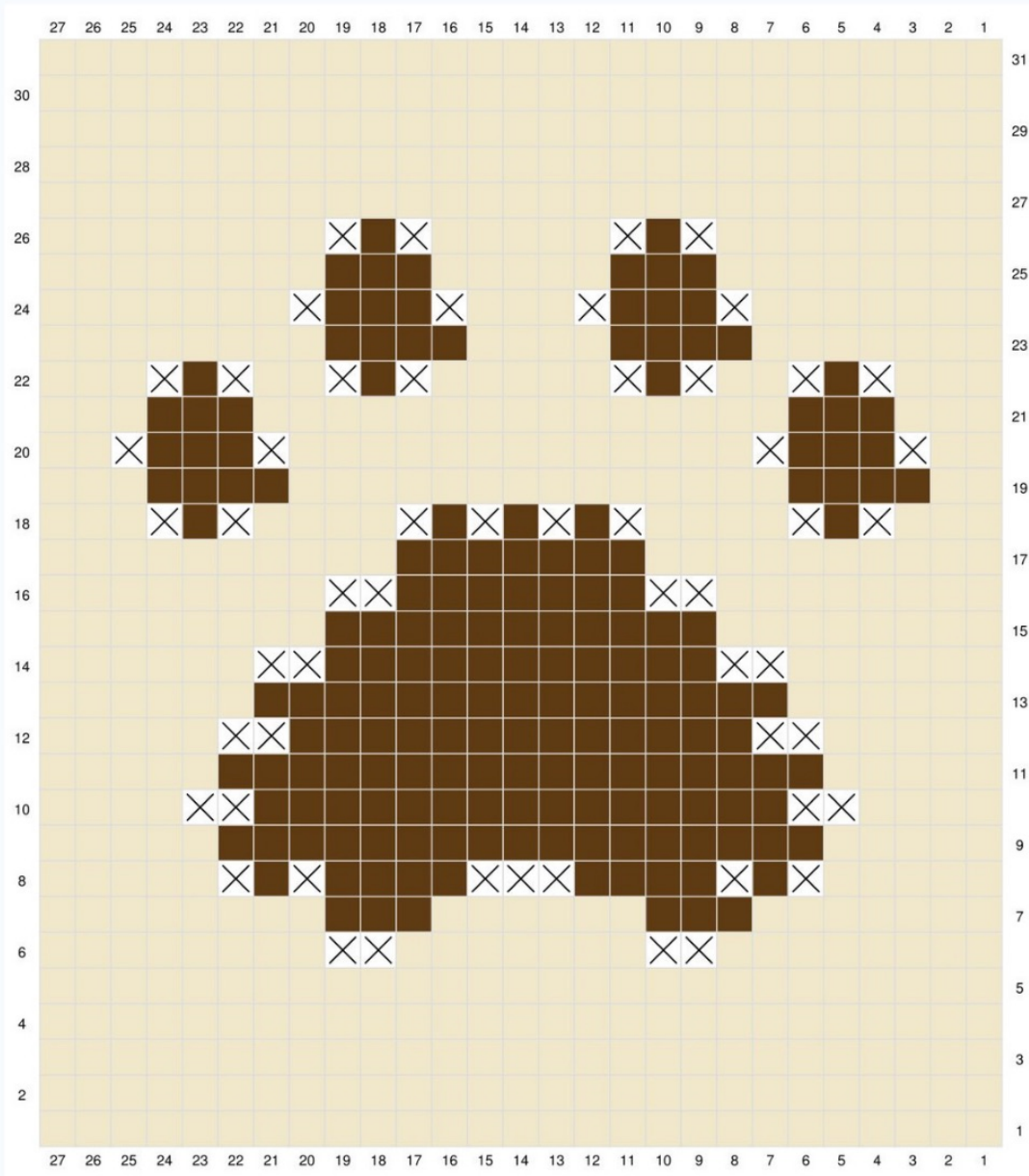
Rnd 3 - Finished.

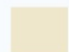


Dog Lover's Hot Pad

Paw Print Chart

This chart shows the placement of the paw print design. Each square represents one stitch.

- Read right to left on RS rows
- Read left to right on WS rows
- Follow the chart along with the written instructions for best results



-  Color A sc
-  Color B sc
-  Color B PC

Dog Lover's Hot Pad

PC STITCH TUTORIAL

The following steps will guide you through creating the popcorn stitch used in the paw print design. This stitch adds texture and dimension to your project, helping the paw print stand out beautifully.

1. Place 4 sc into the same st on previous Row. (Photo 1)
2. Remove hook from the 4th sc and insert into 1st of the 4 just made working from back to front. (Photo 2)
3. Pick up the loop from the 4th sc and pull through. Be sure the popcorn is facing away from you. (Photos 3-5).



1

4 sc in same st on previous row.



2

Remove hook from 4th sc and insert hook into 1st sc of the 4 just made working from back to front.



3

Pick up loop from 4th sc.



4

Pull loop through.



5

PC is complete.

Dog Lover's Hot Pad

COLOR CHANGE TUTORIAL FROM MC TO PC

The following steps will show you how to change from the main color to the paw print color. Making clean color changes will help keep your design neat and well-defined.



1

Begin working sc, do not complete. Stop when 2 loops are on hook.



2

Pick up loop of new color.



3

Pull loop of new color through the 2 loops on hook.



4

Work PC.

Dog Lover's Hot Pad

COLOR CHANGE TUTORIAL FROM PC TO MC

The following steps will guide you through changing back to the main color. Keeping your color transitions consistent will give your finished hot pad a polished look.



1

Begin working 4th sc of PC, do not complete. Stop when 2 loops are on hook.



2

Pick up loop of MC.



3

Pull loop of MC through the 2 loops on hook.



4

Pull loop up and remove hook.



5

Insert hook into 1st sc of the 4 just made, working from back to front.



6

Pick up MC loop from 4th sc.



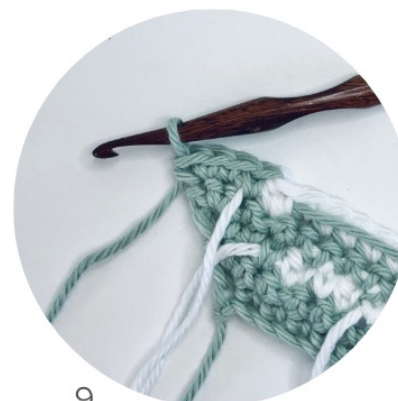
7

Pull loop through.



8

PC is complete.



9

Continue working row with MC.

Finished Dog Lover's Hot Pad

Create one or make a set—perfect for gifting or adding a cozy, handmade touch to your everyday kitchen moments.



Thank You for Stitching with Me

Thank you so much for supporting my small business and choosing this pattern. I hope it brought you a sense of calm and joy while you stitched.

If you share your finished hot pad, I would absolutely love to see it!

Tag me on Instagram: @AngieD_SASS
Or on Facebook: @SASSCrochetDesigns

Use the hashtag:
#DogLoversHotPad

Pattern Support

If you have questions while working this pattern, please reach out at:

 sassyspecialtyshoppe@gmail.com

I'm always happy to help!

Copyright

Dog Lover's Hot Pad © 2026 Angela Dooley | SASS Crochet

This pattern is for personal use only.
You may sell finished items made from this pattern; please credit SASS Crochet as the designer.

Pattern may not be copied, shared, altered, or redistributed in any form.

Find More Patterns

Visit:
www.sassyspecialtyshoppe.com

For more cozy, thoughtful crochet designs.